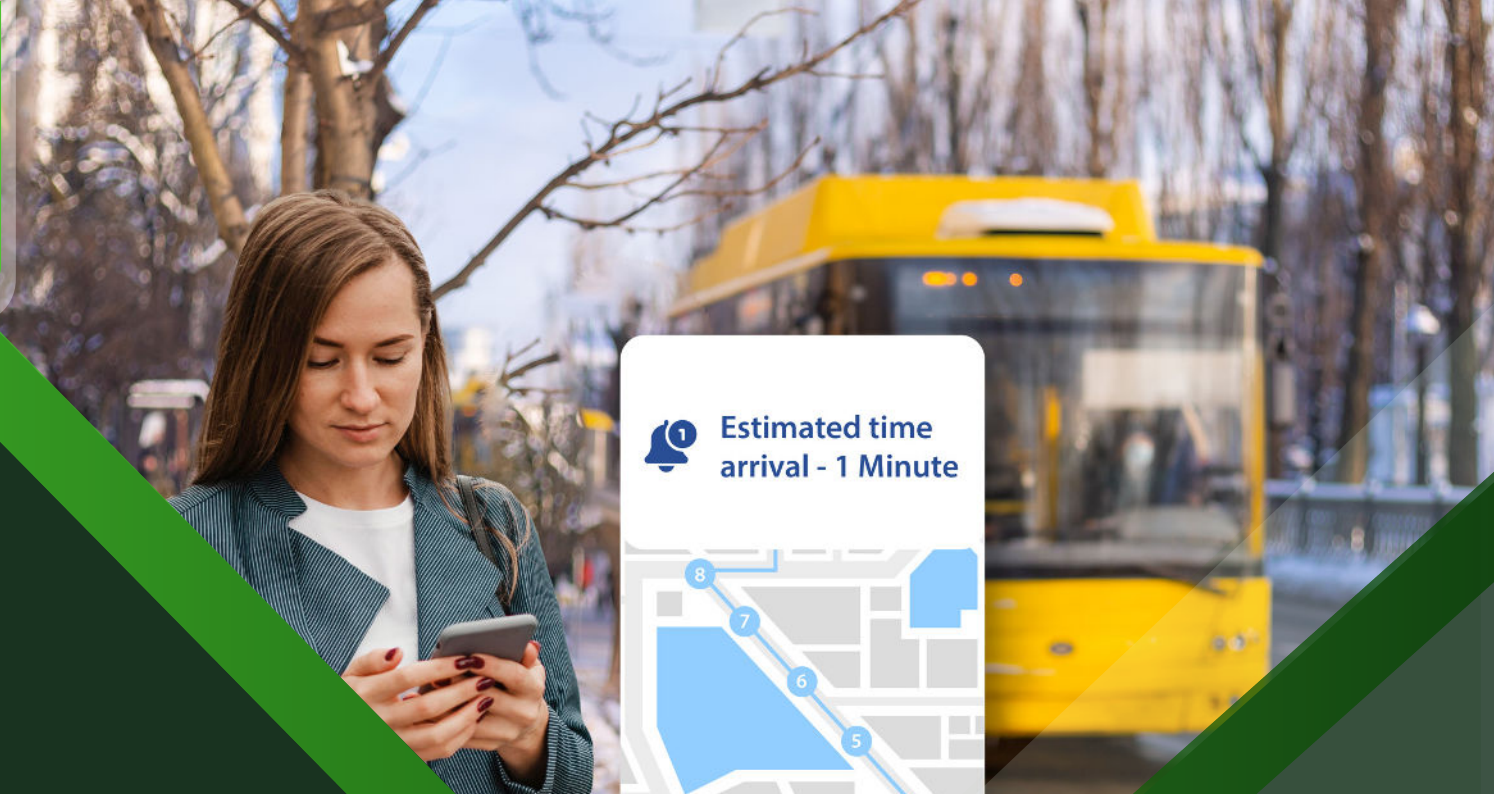
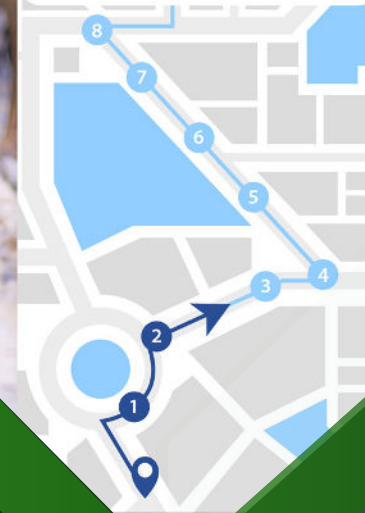


gofleet



Estimated time
arrival - 1 Minute



ZenShuttle

Track and Monitor your Bus with
Speed and Security



OVERVIEW

Intelligent shuttle bus tracking solutions are helping fleet operators improve the efficiency of their operations while enabling passengers to safely reach their destination on time.

ZenduiT's **ZenShuttle** is a user-friendly, intelligent shuttle bus tracking solution for passengers and operators. Fleet operators can schedule, manage, monitor, and track shuttles while providing real-time insights around location, speed, and driver behaviour, helping them improve performance and reduce operational costs.



ENSURE COMPLIANCE

Visibility into shuttle operations, whether on the road or inactive, allow operators to enforce and adhere to compliance and safety regulations.



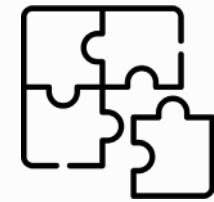
REAL-TIME SCHOOL BUS TRACKING FOR PARENTS

Provides easy access to a child's bus location, with real-time ETA's and automatic notifications.



BUS MANAGEMENT AND MAINTENANCE FOR OPERATORS

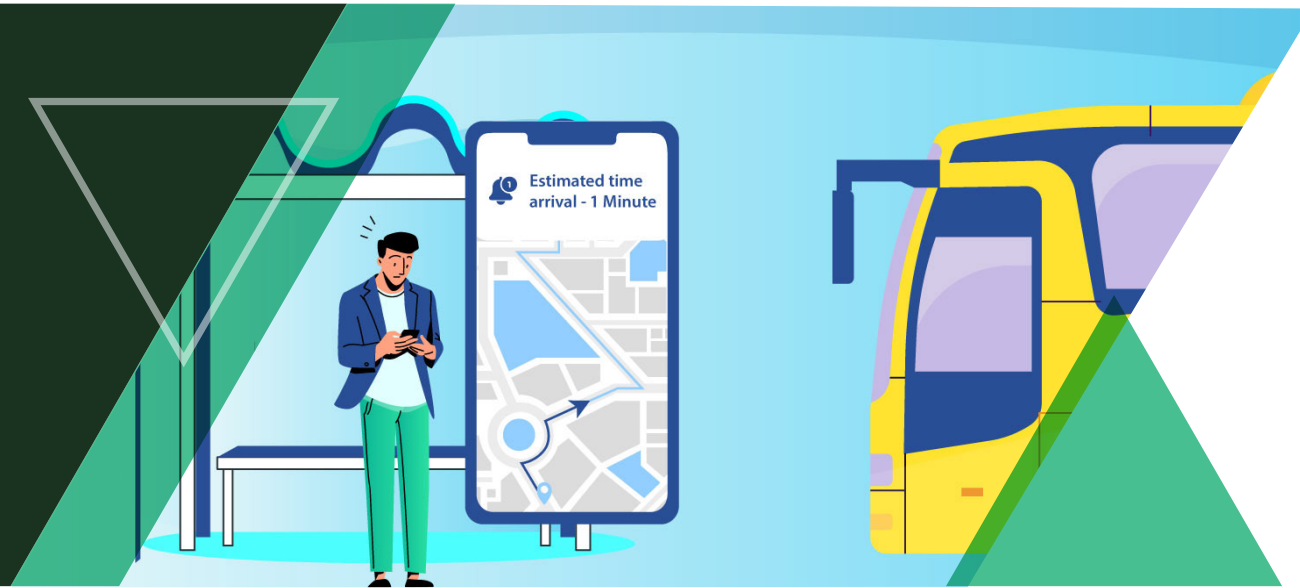
Receive insights on fuel consumption, driver behaviour and health reports for better management and improved vehicle health.



WIDE-RANGING COMPATIBILITY AND EASY SETUP

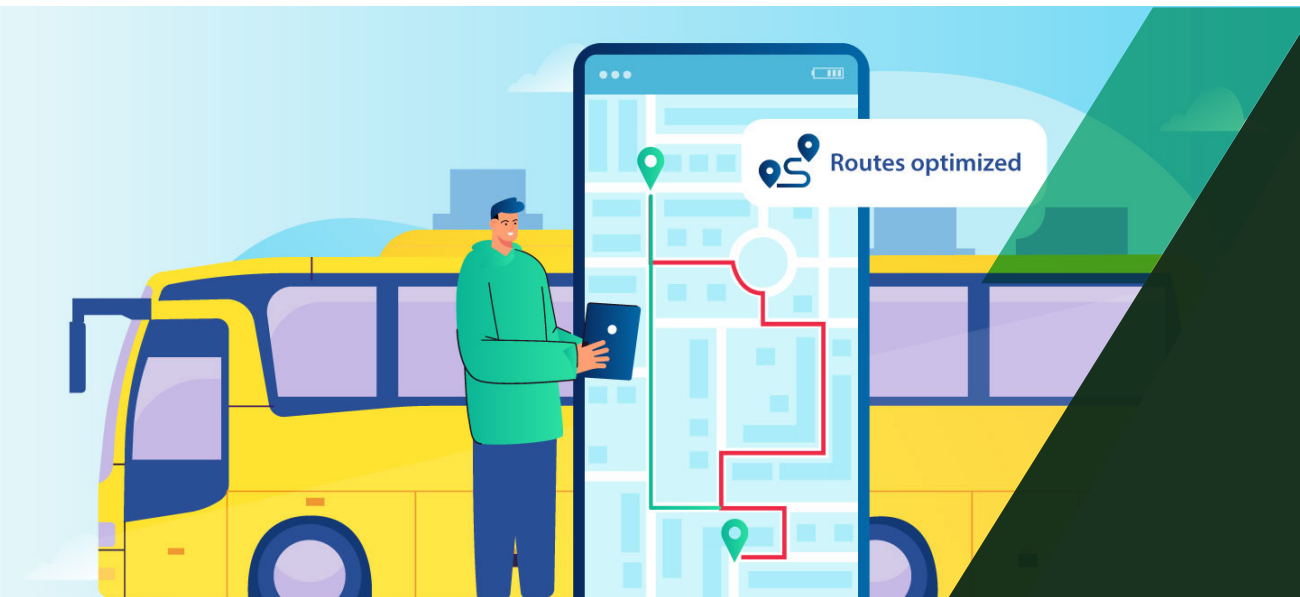
ZenShuttle can seamlessly connect with your existing hardware for scalable, custom requirements that reduce installation costs and save you time.

FEATURE HIGHLIGHTS



Dedicated app to empower passengers

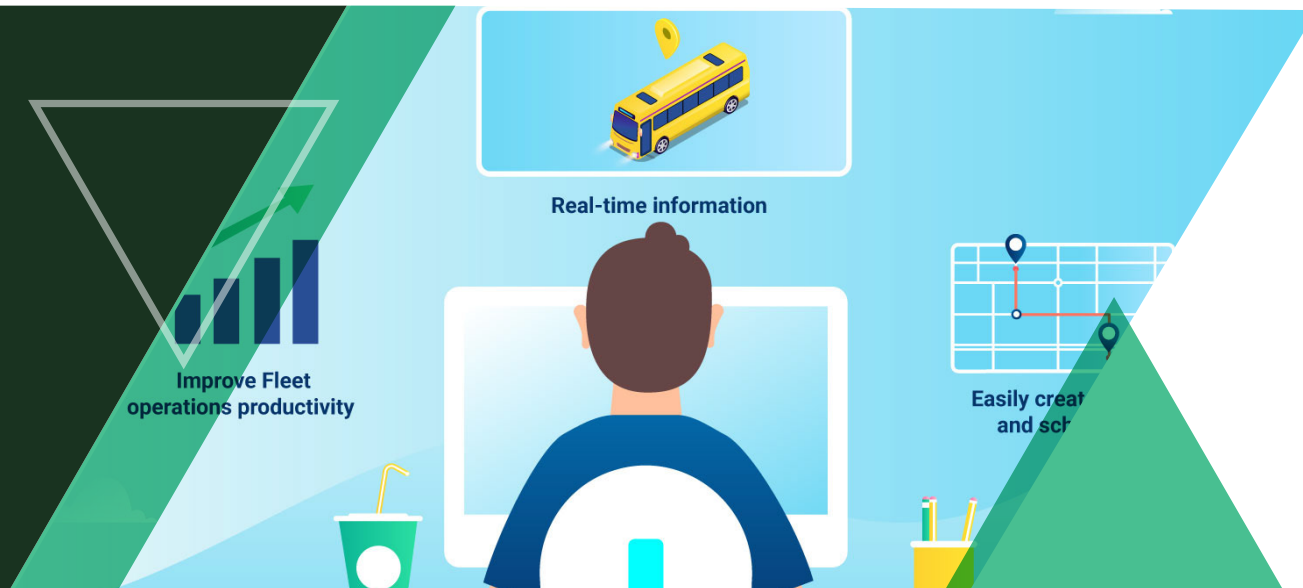
With intelligent real-time location of shuttle buses, including arrival and departure times for each stop, **ZenShuttle** empowers passengers to plan their journey from their Android devices, improving their travel experience and overall ridership.



Route optimization and Geofencing

ZenShuttle enables fleet operators to easily create or import custom routes, add and remove stops to see the impact on travel and arrival times. Our advanced bus tracking system helps optimize bus routes and avoid unnecessary delays. Geofencing can create custom defined areas and provide instant alerts when buses enter or exit those areas, keeping fleet operators in the know instantly.

FEATURE HIGHLIGHTS



Boost the productivity of your shuttle operations

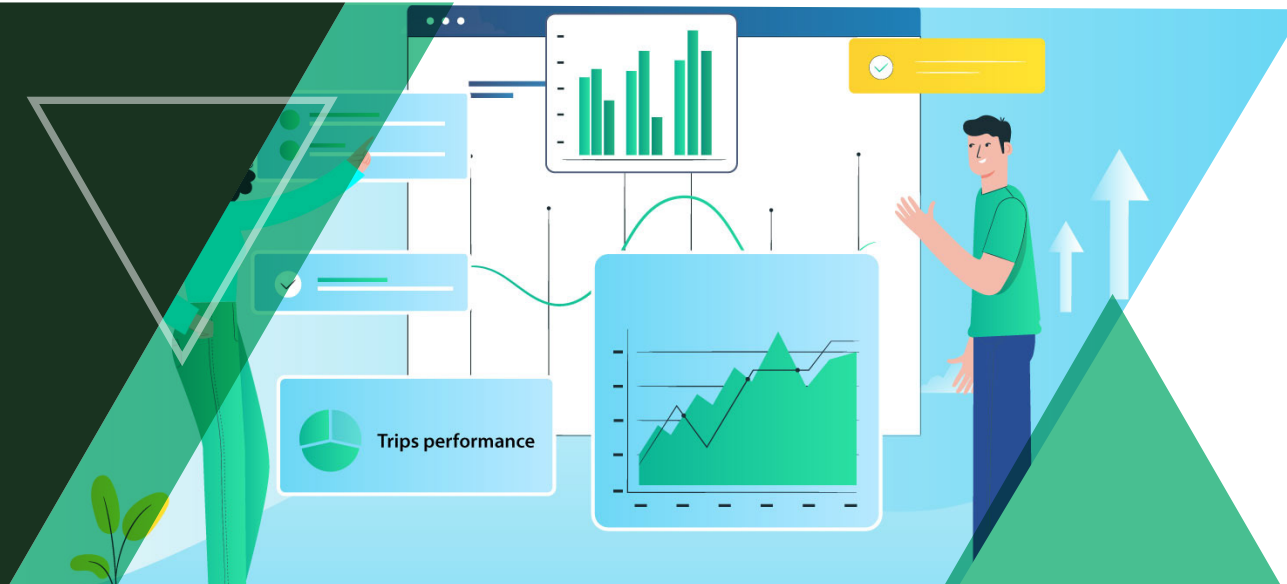
ZenShuttle helps fleet managers improve their operations and productivity while increasing ridership. This solution helps operators easily create routes and schedules, view real-time information about their vehicles and place information directly in the hands of passengers with a single mobile app, making both public transportation management and tracking simple.



Wide-ranging compatibility with simple and scalable setup

The **ZenShuttle** system is compatible with all bus types, making integration a seamless process. ZenduIT's proprietary technology makes this solution compatible with a broader range of devices and infrastructures, resulting in scalable and low-cost installations for fleet operators.

FEATURE HIGHLIGHTS



Generate insights using reports

Powered by **ZenduReport**, **ZenShuttle** creates curated reports for all trips and performance-related data to build powerful visualizations. It also generates high-value insights from recorded bus operations, helping fleet operators track KPIs and identify opportunities for improvement.

DYNAMIC INTEGRATION

zenduCAM



Easily view road and driver-facing footage in real-time through the ZenduCAM secure dashboard using either the desktop or mobile application

Use the ZenduCAM rewind feature to investigate previous incidents or search for a specific event

Apply ZenduCAM predefined rules to trigger and analyze critical events

Take advantage of ZenduCAM's unlimited cloud storage to record uninterrupted events from the dash camera