



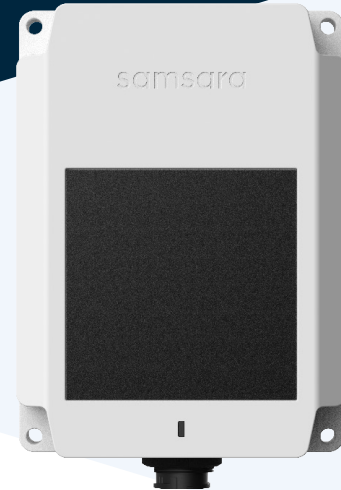
samsara

goFleet
Connected Intelligence. Smarter Solutions.

AG24 for Equipment Tracking

Driving Efficiency with

Full Fleet Visibility



Samsara offers an advanced IoT fleet management solution that combines internet-connected sensors with cloud-based software to help fleets of all sizes improve operational efficiency, and increase equipment utilization. By bringing heavy equipment and other key assets into view, Samsara gives managers the tools to make data-driven decisions that impact their bottom

— 01

ACHIEVE COMPLETE VISIBILITY

Bring your equipment operations into focus alongside your truck and driver data, all in one easy-to-use platform.

— 02

STREAMLINE YOUR OPERATIONS

Simplify job assignment decisions and communication. Easily get lost or dormant assets back into circulation.

— 03

TRACK PERFORMANCE

Gain additional visibility into engine diagnostic data, and machine up-time to compare performance of different machines types and locations.

— 04

RETURN ON YOUR INVESTMENT

Keep your equipment on the job by scheduling preventative maintenance, tracking usage, and reducing down time.

NEXT PAGE —>

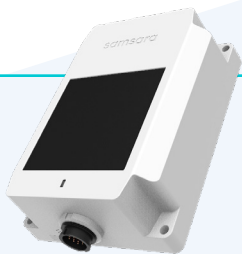
PART OF A UNIFIED PLATFORM FOR FLEET EFFICIENCY, SAFETY, AND SUSTAINABILITY

How it Works

Samsara's AG24 for powered assets is ruggedized and weatherproofed, relaying real-time GPS data via the cloud while withstanding the toughest environmental conditions. Equipment engine and diagnostic data powers maintenance scheduling, fault code analysis, job scheduling, and robust reporting on Utilization and Billing, ensuring fleet managers get the maximum return on their trailer investment

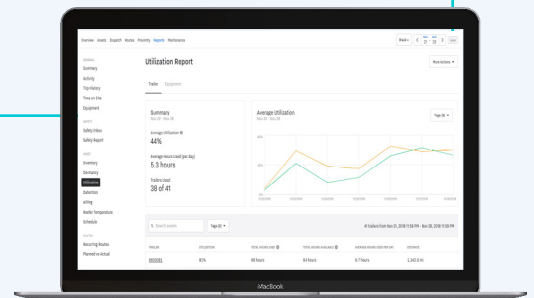
AG24 HIGHLIGHTS

- ▶ Real-time, to-the-second cloud-based GPS reporting for trailers
- ▶ Powered by equipment specific cables including a 9-pin cable for CAT equipment, and standard J1939 9-pin and open wire cables compatible with a wide variety of equipment types
- ▶ Long-lasting, rechargeable battery, with solar backup
- ▶ Easy to install, weatherproof, and water-resistant (IP67 rating)
- ▶ Continuous 4G LTE cellular connectivity, with 3G fallback where LTE coverage is unavailable



PLATFORM HIGHLIGHTS

- ▶ Equipment Scheduling tool incorporates inventory availability into job assignment
- ▶ Real-time geofence alerts support inventory management, and rapid theft detection
- ▶ Billing reporting eliminates inaccurate manual engine hour collection, simplifying invoicing and shortening your billing cycle
- ▶ Preventative maintenance scheduling improves equipment uptime and reduces machine failure in the field
- ▶ Utilization reports give fleet managers the tools to rightsize their fleets with confidence



TRUSTED BY FLEETS OF ALL SIZES



Interested in learning more about Samsara?

Contact us today at sales@gofleet.com for a live demo or pricing