

Installation Guide for Setting up Valor TPMS with Geotab

Valor's Tire Pressure and Temperature Monitoring Kits are for use in:

- Straight truck / Bus up to 6 axles 24 tires
- Tractor with or without trailer to 6 axles 24 tires
- Max. 3 trailers onto one tractor 6 axles 24 tires each trailer

Reporting and Exceptions are included with MyGeotab Pro Plan

Valor-Geotab IOX TPMS integration Components required from Geotab

- GO7 device
- Vehicle specific Interface harness for GO device
- IOX CAN harness

NOTE: Minimum system requirements: GO7 IOX-CAN

Valor TPMS KITS - In Cab Components Required:

For Truck / Bus TPMS

- Transceiver box (CANBUS Box)
- Valor wire harness for connection to IOX CAN (Go Wire Harness)
- One Antenna Extension
- Two antenna's
- One splitter box
- Zip ties
- 2" gauge (OPTIONAL)
- G Wire Harness (OPTIONAL -goes with gauge)
- Individual sensors sold separately. NOT INCLUDED IN KIT

						OPTIONAL	
Tranceiver Box	Go Wire Harness	Antenna Extension	Antenna	Splitter Box	Zip Ties	G Wire Harness	2" Guage
							

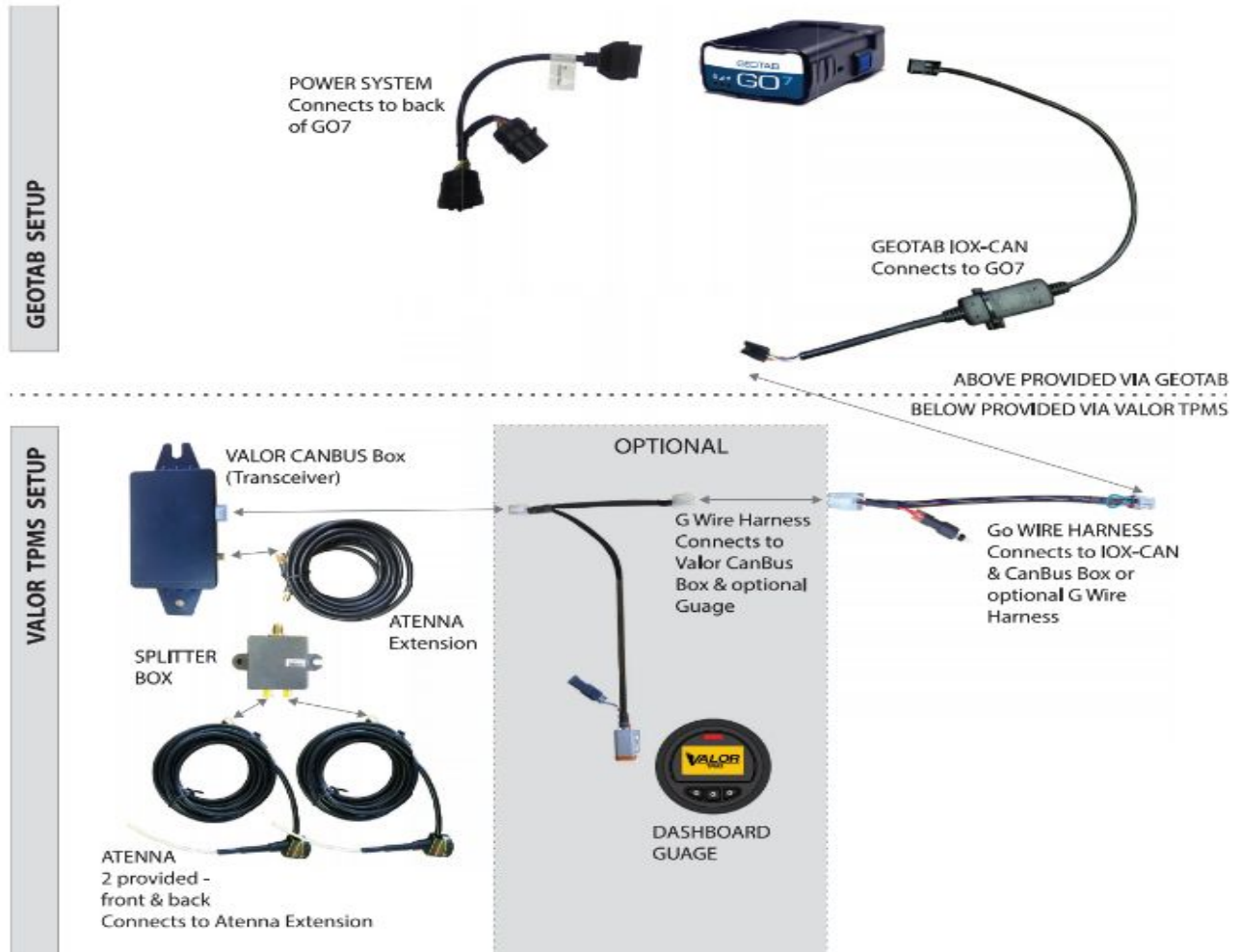
Valor TPMS KITS - Wheel Sensor Set up Components Required:

Order individually for Truck / Bus TPMS

- Sensors
- SS Band
- Valor Programming Tool (only require one)

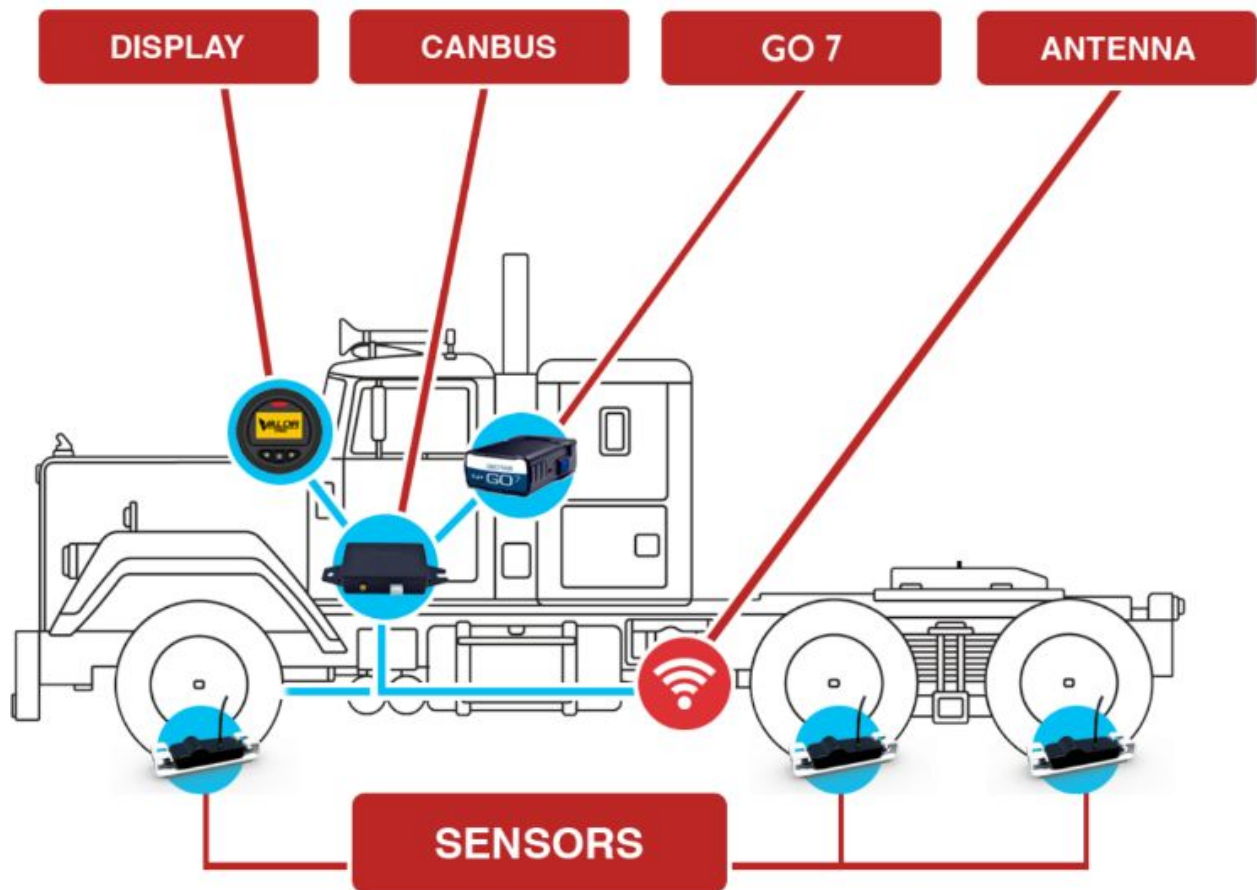
Wheel Sensor	SS Band	Programming Tool
		

Valor - Geotab IOX-CAN - TPMS SETUP



Valor TPMS - In Cab Installation

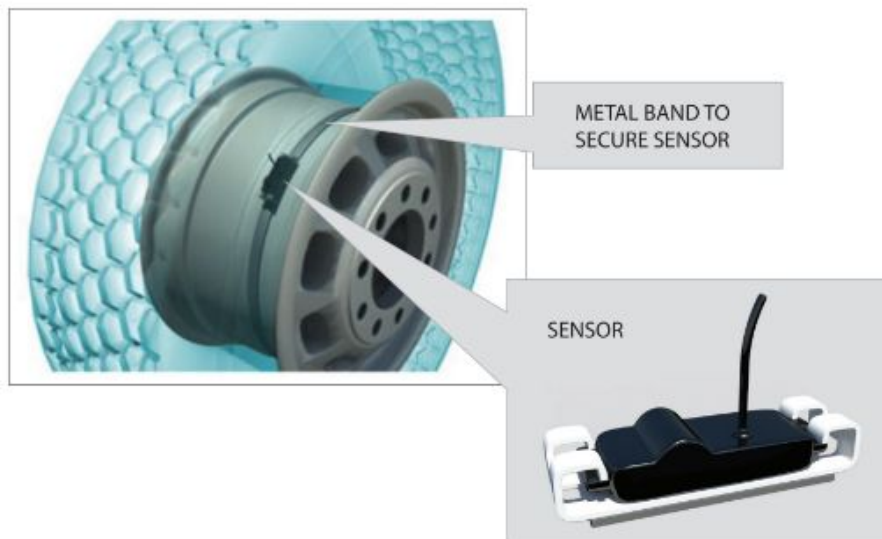
1. Remove items from box and ensure all parts are present
2. Valor CANBUS Box (Transceiver box) needs to be installed near the GO unit; wire harness is provided for “Plug & Play” installation
3. Connect to IOX-CAN with provided harness and connect IOX to GO device
4. If installing driver display guage (optional), use G Wire Harness (optional) supplied
5. Route antenna extension to exterior of cab, attach to single lead on splitter box
6. Attach antenna’s to splitter box and mount each end in a safe place out of step and pinch points (see diagram below)



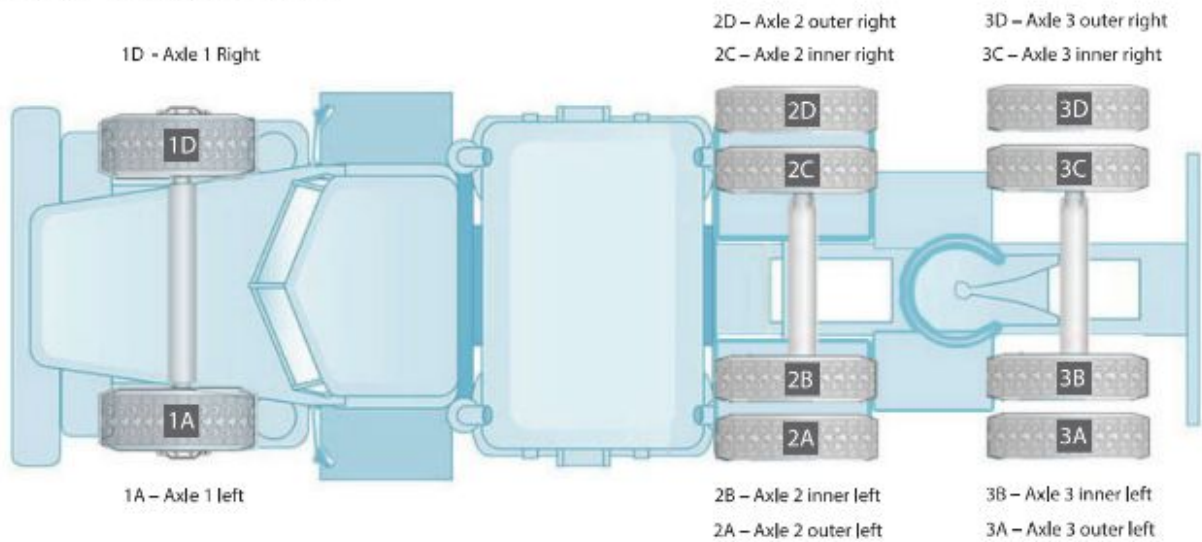
Valor - Wheel Sensor Installation

- Each sensor has a unique identifier code. Using the Valor Smart Tool, the code must be programmed into the Valor CanBus Box. (programming instructions in the kit)
- Attach sensors directly onto the rim using the supplied Stainless Steel band (see diagram below)
- Place sensor near tire valve. Peel adhesive cover and attach sensor to the rim. Run supplied SS band through sensor bracket and tighten. CAUTION: Do not exceed 2lb/foot pressure.
- Once tire sensor is installed and pressure exceeds 20 PSI, the sensor is active.

SENSOR POSITION ON TIRE RIM



SENSOR PLACEMENT



TPMS Reporting

Each tire transmits independently and records on:

- Ignition on and off
- 3 PSI change in pressure
- 5 degrees change in temperature
- 30 min of operation
- Exceptions for over or under pressure thresholds
- Exceptions for over or under temperature thresholds
- Tracks and reports data over the course of the trip

SAMPLE REPORT

